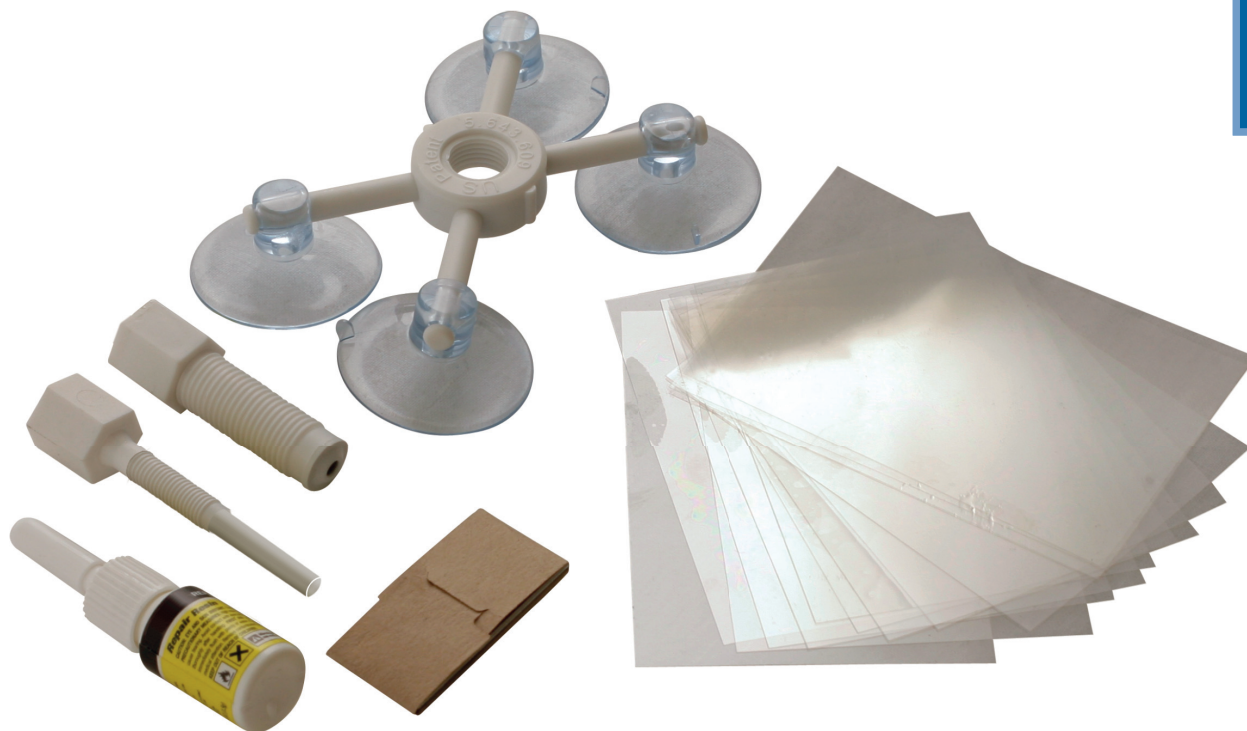


Windshield Repair Kit

NEW
PRODUCT



Description

- For all types of laminated windshields
- Minimises the appearance of chips and cracks in windshields and stops them spreading
- Durable resin formula
- Good for multiple repairs
- Will not repair more than one layer of glass

Packaging

Stick-on blister and instructions

Additional Information

CE and Rohs



05 April 2011

5 018341 051983 >

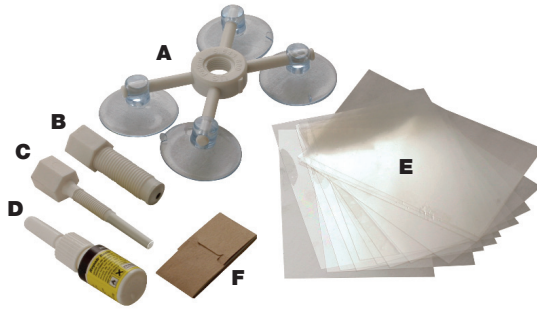
Plan Layout

Minimise the appearance and stop the spread of chips and cracks in your windscreen. This product removes air from the chip and fills it with durable resin, making it even stronger than before. The resin cures under UV light (bright sunshine or UV lamp).

For best results use as soon as possible after the damage occurs and before the chip is contaminated with water or dirt.

Avoid the use of glass treatments prior to use and for one week after.

Note: This product will not repair more than one layer of glass.



| Ref | Description |
|-----|-------------------------------------|
| A | Applicator base (four suction cups) |
| B | Resin chamber |
| C | Pressure driver |
| D | Resin 1.5g |
| E | Curing strip 10 |
| F | Razor blade |

Instructions for Chips

1. The windscreen and work area should be shaded from direct sunlight until repair is completed.
2. Clean the glass with dry paper towel, and if necessary, remove glass fragments by scraping with the razor blade provided.
3. Fix the four suction cup support on the windscreen taking care to ensure that the centre is directly over the damage. (Fig 2).
4. (Fig 3). Screw the resin chamber (B) into the centre ring (clockwise) until it presses lightly onto the windscreen damage. (Fig 4).
5. Snip the end off the tip of the repair resin bottle. Squeeze 3-6 drops of resin (depending on extent of damage) into the resin chamber. (Fig 5). If resin seeps out from the bottom of the resin chamber, tighten gently to stop the leakage.
6. Screw the pressure driver (C) into the resin chamber to drive the resin into the chip. Insert almost fully, checking from inside the car to make sure the rubber mouth has fully opened. (Fig 6).
7. Allow approximately 4-6 minutes for the resin to be absorbed into the chip.
8. Tighten the pressure driver a further 1/4 to 1/2 of a turn to push the resin further into the chip.

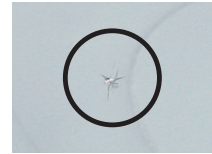


Fig. 2



Fig. 3



Fig. 4



Ensure rubber tip of resin chamber seals against surface of screen

Instructions for Chips

9. Unscrew and remove the pressure driver from the resin chamber to release any air in the chamber.
10. Re-insert the pressure driver and screw down again to displace any air remaining in the chip.
11. View the repair from inside the car at an angle of 45° to check for air bubbles. If the cracks are still visible, repeat steps 6-10.
12. When all air has been removed, undo the resin chamber and pressure driver and remove the suction cup support by lifting the small tabs on each cup.
13. Have a paper towel to hand to wipe away excess resin from resin chamber so that it does not drip onto the windscreen.
14. (Fig 7). Where the repair is still visible add a small drop of resin to the repair and gently lay a curing strip over the repair. No pressure is required. (Fig 8).
15. Move the car into direct sunlight and allow the resin to cure for 5-10 minutes (or use an Ultra-Violet light if available). (May take longer if not bright and sunny.)
16. Lift off the curing strip.
17. Ensure the resin is dry and take the razor blade (F) at 90° angle and gently scrap away any residue resin. This will appear as white flakes.
18. If any blemish is apparent, repeat steps 14-16.



Instructions for Cracks

This product is not suitable for cracks over 30cm (12") long or if the crack extends to the edge of the windscreen in two places. Also not suitable for cracks in the inner layer of glass. Using the resin applicator bottle, very gently apply resin to the crack at a pace of 3 seconds per centimetre.

1. Look at the crack at 45° angle to see the shaded (dark) area is filling with resin.
2. Allow the resin to be absorbed into the crack for 5-10 minutes.
3. If air pockets remain in the crack a small amount of pressure from the inside of the windscreen should disperse them. Take care not to apply too much pressure as this could increase the crack.
4. Continue to check the dark areas and repeat Step 4 until no dark areas are visible.
5. After all air has been removed, reapply resin to the length of the crack and place curing strips on covered areas as the resin is applied.
6. Make sure there is no air left under the curing strips
7. When the crack is covered move the car into direct sunlight (or use an Ultra-Violet light if available).
8. Allow resin to cure completely 5-10 minutes. (May take longer if not bright and sunny.)
9. Remove curing strips when resin is completely dry.
10. Scrap off hardened repair resin with razor blade at 90°.

Note: Old chips, stars and cracks that have been contaminated with dirt / dust may not absorb the resin sufficiently to provide an acceptable repair.